

Wyoming Department of Environmental Quality

Big Horn River Total Maximum Daily Load (TMDL) Project

INSIDE THIS ISSUE:

Upcoming Public Meetings	1
Watershed Characterization	1
What is a TMDL?	2
Project Schedule	2
Technical Steering Committee Activities	2

PROJECT GOALS

The goals of the Big Horn River TMDL Project are to understand and incorporate information from existing reports and the results from previous stream monitoring activities, develop an implementable TMDL for the Big Horn and Greybull Rivers, provide a tool to aid in prioritizing TMDL implementation plans, address the needs and concerns of the watershed, and consider the concerns of stakeholders.

CONTACTS

Wyoming Department of Environmental Quality

Mike Wachtendonk
Interim TMDL Coordinator
(307) 335-6751
michael.wachtendonk@wyo.gov

RESPEC Consulting & Services

Jared Oswald
Project Manager
(605) 394-6400
jared.oswald@respec.com

Upcoming Public Meetings

Learn more about the Big Horn River Total Maximum Daily Load Project at the upcoming public meetings, which will include a presentation on watershed characterization and time for questions and discussion. There will also be an opportunity to visit with project representatives. Please attend one of these meetings and provide valuable input for the project.

Tuesday, July 12, 2011

6:00 pm - 8:00 pm

***Worland Community Center Complex
Worland, WY***

Wednesday, July 13, 2011

6:00 – 8:00 pm

***Meeteetse Conservation District Office
Meeteetse, WY***

A flyer for the event is provided on the last page of the newsletter. Feel free to post or forward on to others who might be interested in this project.

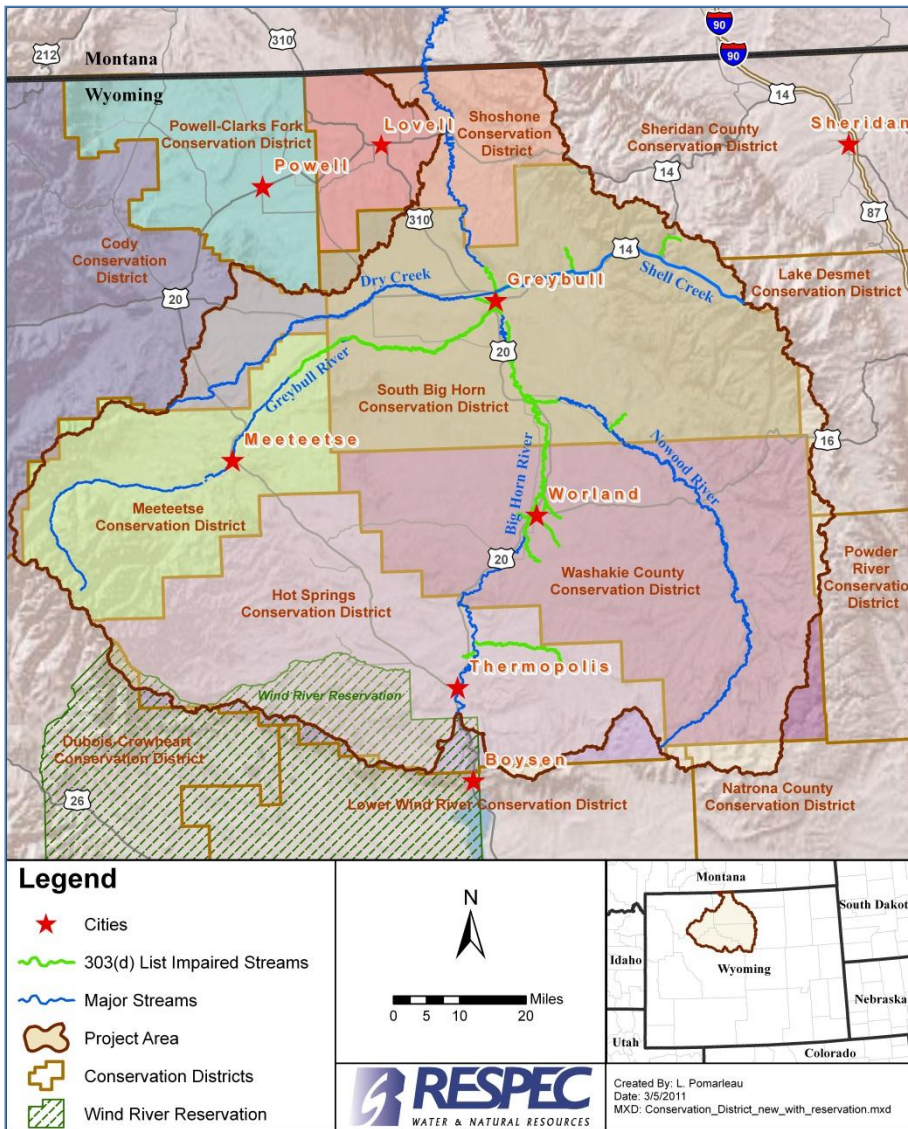
Coming Soon!
WDEQ will post a website link soon for this project on their TMDL Development page.



Watershed Characterization

The goal of watershed characterization, the first phase of the Big Horn TMDL Project, is to gather data needed for TMDL modeling and to identify previous work that has already been completed through other watershed studies. The data will be compiled into a geospatial database where the temporal and spatial aspects of the data will be further examined.

The data collected will be used in the second phase of the project – TMDL modeling and analysis. A common data shortfall found in TMDL projects is not having enough water quality and water discharge data at the same location. Since discharge data are required to calculate contaminant loading, this is crucial information for TMDL development. Hydrologic and hydraulic modeling helps to fill in these gaps. Knowledge of the watershed gained during this phase of the project will be used to describe the problems within the watershed that will guide the rest of the project and is one part of an adaptive management approach to developing TMDLs.



What is a TMDL?

A Total Maximum Daily Load (TMDL) is defined as the amount of pollutant a stream can accept and still meet its designated uses. A TMDL study is required by the Clean Water Act when a waterbody is determined to not be meeting its assigned designated uses. This TMDL project is being conducted to develop TMDLs as the first step toward alleviating impairments of Wyoming water quality standards for bacteria in stream sections of the Big Horn and Greybull Rivers.



This map shows the location of the Conservation Districts and the Wind River Reservation in the Big Horn River watershed. Stream segments that are impaired for bacteria are shown in green.

Technical Steering Committee Activities

A Technical Steering Committee consisting of representatives from Conservation Districts, Wyoming Association of Conservation Districts, Wyoming Game and Fish Department, Wyoming Department of Environmental Quality, United States Forest Service, Bureau of Land Management, and the project team is now meeting once a month by phone and in person at each phase of the project. The purpose of the committee is to establish a group of technically-oriented stakeholders that monitor the project's progress and provide guidance to the project team. If interested in joining the committee, please contact Mike Wachtendonk at WDEQ.

Project Schedule

Phase I (January – June 2011)

Watershed characterization and identification of additional monitoring needs.

Phase 2 (June 2011 – January 2012)

TMDL analysis to estimate the existing source loads, the allowable loading capacity, and the allocation of the loads required to meet the TMDL.

Phase 3 (January – June 2012)

Development of TMDL implementation recommendations that are based on existing watershed plans.

Wyoming Department of Environmental Quality

Big Horn River Total Maximum Daily Load Project

Public Meetings

Tuesday
July 12, 2011
6 PM – 8 PM
Worland Community
Center Complex
1200 Culbertson Ave
Worland, WY

Wednesday
July 13, 2011
6 PM – 8 PM
Meeteetse Conservation
District Office
910 Park Ave
Meeteetse, WY



Meeting agenda includes:

Watershed Characterization

For additional information please contact:

Project Manager - Jared Oswald (605) 394-6400 jared.oswald@respec.com

