

# SHERIDAN COUNTY CONSERVATION DISTRICT

## 1996

Big Goose and Little Goose Creek were listed as impaired due to fecal coliform.

**2000** The following waters were added to the list of impaired waters due to exceedences of the fecal coliform standard: Goose Creek, Park Creek, Beaver Creek, Soldier Creek, Jackson Creek, Kruse Creek, Sacket Creek, Park Creek, and Rapid Creek.

**2004** McCormick Creek was listed due to fecal coliform

**2006** Goose Creek and Little Goose Creek, within the City of Sheridan, was listed due to excess sediment.

**2001-2002** The district monitored 46 stations in the watershed.

**2005** Interim monitoring was conducted on 19 stations.

**2005** Final Goose Creek watershed plan completed and approved by DEQ.

## On the ground implementation

Since 2001, there have been 11 animal feeding operation and eight septic rehabilitation projects completed. Two additional septic projects were approved in and one additional stream restoration/irrigation diversion upgrade project is under contract.

## Information & Education Outreach

In 2001, the district hosted two animal feeding operation workshops, in Dayton and Sheridan, with 30 participants. In 2002, an additional animal feeding operation workshop was held with 10 participating.

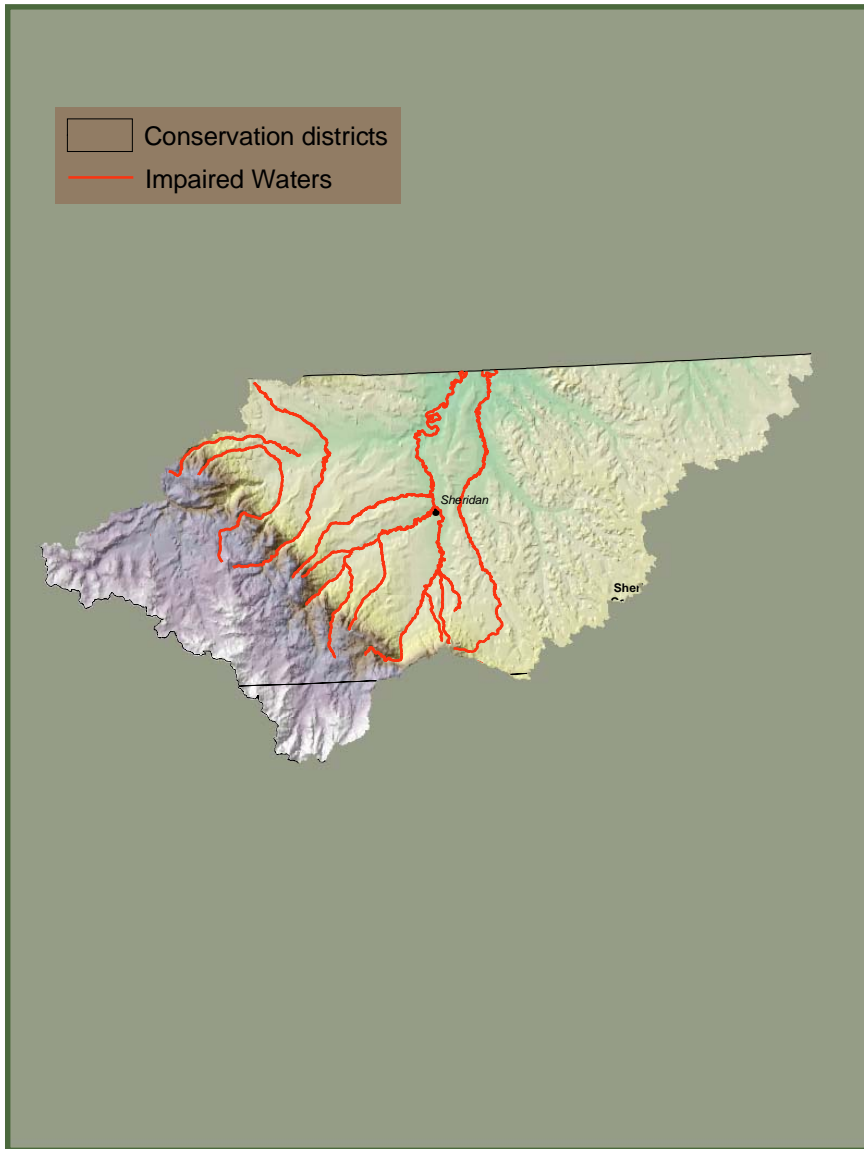
In 2003, an additional AFO workshop was held and a workshop on pathogens, including AFO and septic information was held. The Goose Creek Water Assessment summary booklet was distributed to approximately 500 residents as well as City and County officials.

In 2005, a Goose Creek watershed project logo contest was held as recommended in the Goose Creek Watershed Plan.

In June 2006, the first annual Goose Creek Watershed Newsletter was distributed to 9,500 residents via the City of Sheridan Consumer Confidence Reports. In February 2007, the Goose Creek Watershed Information booklet "Improving Water Quality in the Goose Creek Watershed: What Can You Do?" was distributed to 2,300 watershed residents. In June 2007, the second annual Goose Creek watershed newsletter was distributed.



# TONGUE RIVER WATERSHED



## Watershed Investment

Local	\$ 138,703
State	\$ 62,287
Federal	\$ 480,349
Private	\$ 120,640

**Total**                **\$ 801,979**

## Contributors

Sheridan County Conservation District  
 Department of Agriculture  
 DEQ/EPA  
 Private Landowners & Homeowners

## Partners

Representatives from Sheridan County Planning and Engineering offices, the City of Sheridan, Department of Environmental Quality, Game and Fish, large subdivisions and feedlots, landowners, and residents attended the planning meetings.

