

# POWELL-CLARKS FORK CONSERVATION DISTRICT

**2000** Bitter Creek was listed as impaired, from the Shoshone River upstream an undetermined distance above Powell, due to fecal coliform.

**2000** Shoshone River was listed as impaired due to fecal coliform. The river was listed from the confluence with Bighorn Lake upstream an undetermined distance.

**2001 – 2007** The district monitored nine sites in the Bitter Creek watershed for fecal coliform and chemical parameters and one site for physical data. The district also monitored one site on Alkali Creek and three sites on Line Creek for both chemical and physical parameters. In 2007, the district updated the Sampling and Analysis Plan and conducted sampling at eight sites, including three sites on the Shoshone River.

**2005** Watershed plan for the Bitter Creek watershed approved by DEQ.

**2007** Watershed planning on the Shoshone River was initiated.

## On the ground implementation

Since the listings there have been a total of seven septic rehabilitation projects completed, two additional projects are in the implementation phase and 14 additional projects are pending. Included with the cost share assistance, district personnel assisted with percolation tests and site se-

lection and placement. There have been a total of six animal feeding operation projects implemented.

## Information & Education Outreach

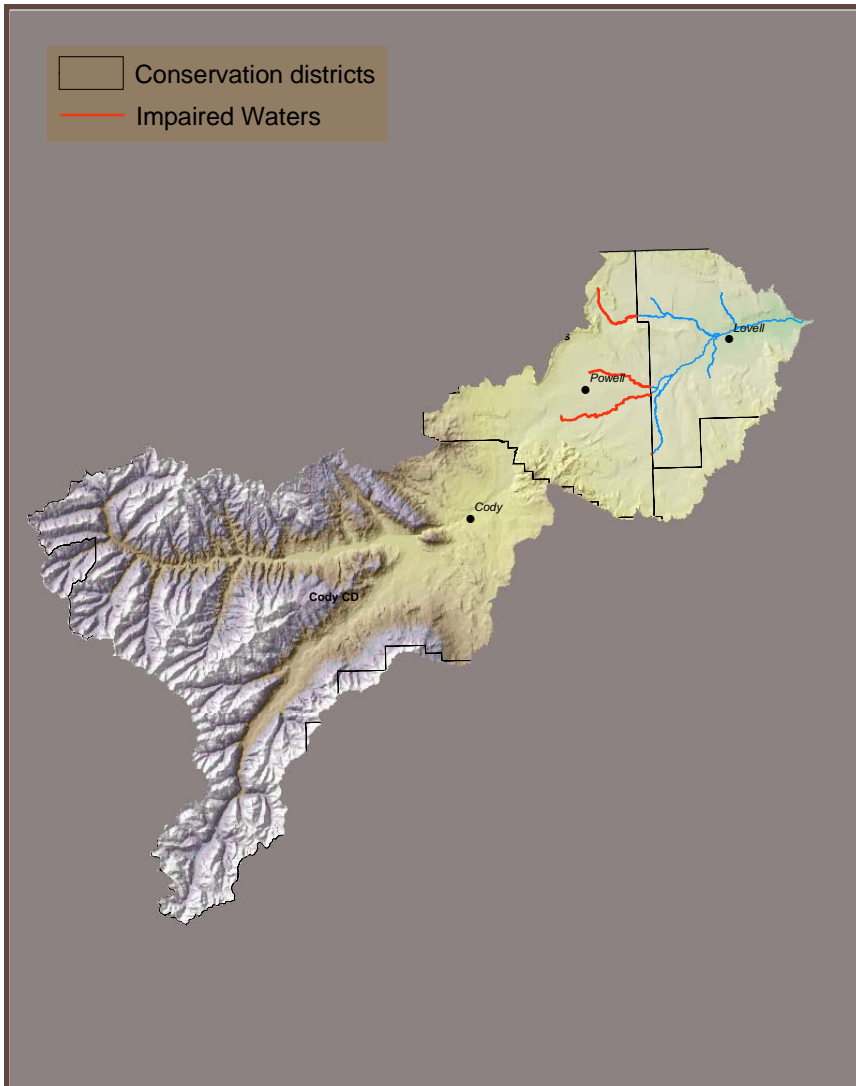
Educational efforts have included the publication of three newsletters that have featured Bitter Creek watershed information and education, newspaper articles, and nine public presentations. In 2006, a mailing to 1,400 rural homeowners in the Bitter Creek watershed with information on proper septic care, assessment and cost share information was distributed, and a water quality workshop and tour was held with 40 participants.

In 2007, a presentation on Bitter Creek efforts was made to 15 Powell Rotarians. A presentation was given at a CRM state level teachers conference on the water quality issues at Bitter Creek and a project with high school science students on Bitter Creek was completed. Approximately 30 teachers and 17 students participated in this effort.

A Workshop on Watershed Health sponsored by Meeteetse CD and Powell Clarks Fork CD was also held in 2007 with 20 attendees. The district also launched a new website in 2007.



# BIG HORN RIVER WATERSHED



## Watershed investment

Local \$ 78,400  
State \$ 9,500  
Federal \$ 1,109,824  
Private \$ 654,853

**Total \$ 1,852,577**

## Contributors

Landowners & Homeowners  
Powell Clarks Fork Conservation District  
Department of Agriculture  
Natural Resources Conservation Service

## Partners

The Bitter Creek Steering Committee included several landowners within the watershed, representatives of the Shoshone Irrigation District, Park County Commission, Park County Small Waste Water Treatment, City of Powell Waste Water Treatment, and the conservation district.

