

# MEETEETSE CONSERVATION DISTRICT

**2002**

The Greybull River was listed as impaired, from the confluence with the Big Horn River upstream an undetermined distance.

**2002** The district conducted E. Coli sampling, plus a number of other parameters, on three sites within the district, including the Greybull River, and reconnaissance monitoring on other waterbodies. Three additional sites for continuous monitoring are pending DEQ approval of Sampling and Analysis Plan revision.

**2004** Data submitted by the Meeteetse Conservation District resulted in the listing of the Greybull being modified from the confluence with the Big Horn River upstream to the Wyoming Highway 120 Bridge.

**2006** Additional monitoring led to a further reduction of the impaired reach from the confluence with Big-horn River upstream to the Sheets Flat bridge.

**2007** The provisional results of the Greybull River Sheets Flat E.coli project were published.

**2006** Watershed planning was initiated and plan completion is anticipated in 2008.

## On the ground implementation

**In 2003**, one animal feeding operation project was completed which relocated a feeding operation away from the Greybull

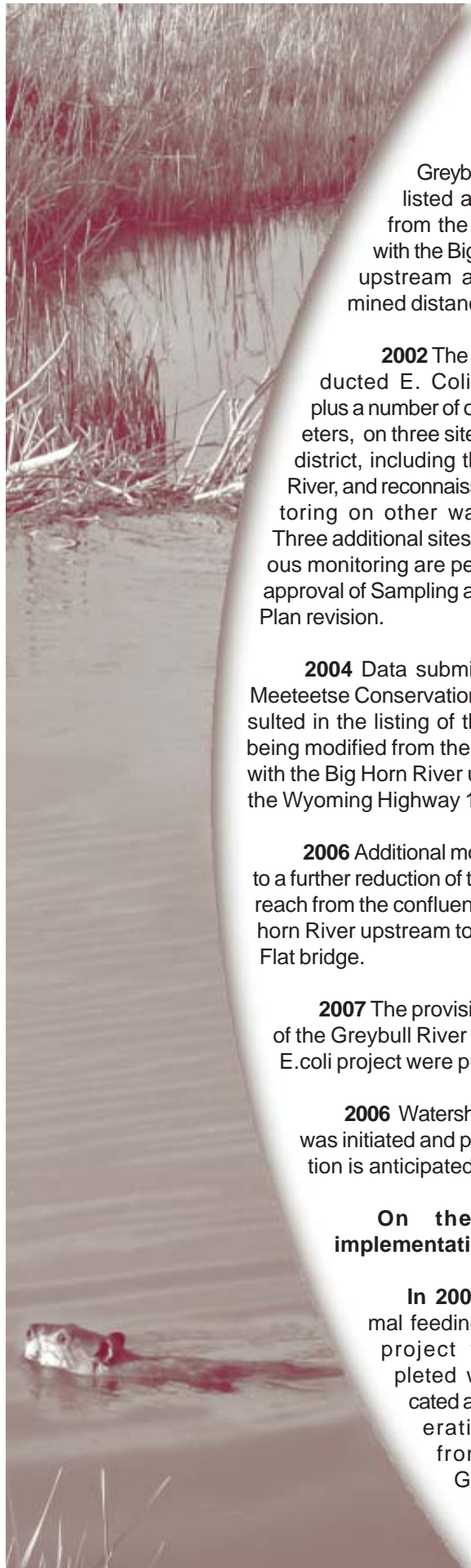
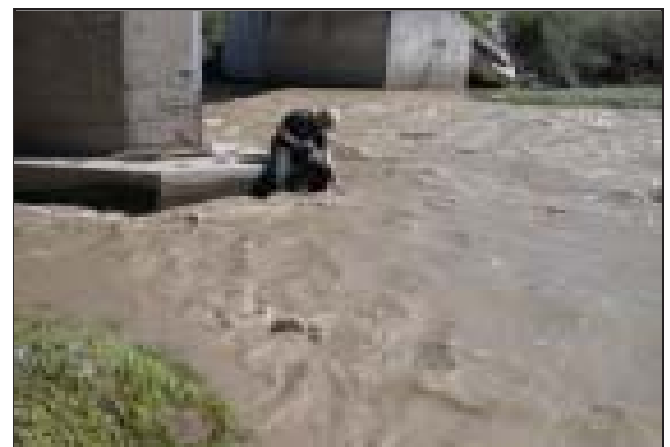
River. A number of other practices were implemented in the watershed through Farm Bill programs.

## Information & Education Outreach

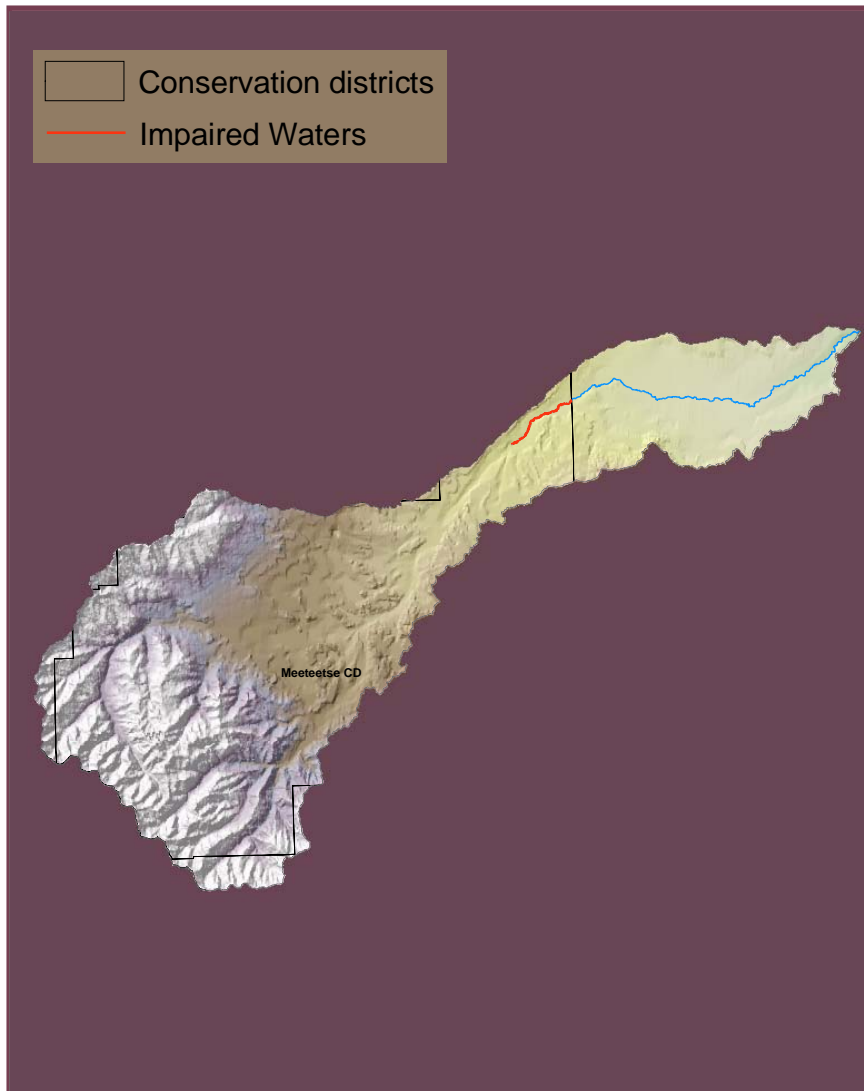
The district has published four newsletter articles related to the listing and impairment and created a website which includes water quality activities and watershed planning information.

In March 2006, the district hosted an open house to discuss natural resource issues. The Greybull River Watershed plan was initiated during this meeting and a watershed steering committee was formed. In 2007, further watershed planning and TMDL development discussion occurred.

In the winter of 2007, the district, in coordination with the Cody and Powell-Clarks Fork districts, hosted a "Watershed Health" workshop.



# BIG HORN RIVER WATERSHED



## Watershed Investment

Local	\$142,806
State	\$ 23,627
Federal	\$528,359
Private	\$454,484

**Total**                    **\$1,149,276**

## Contributors

Meeteetse Conservation District  
Department of Agriculture  
Natural Resources Conservation Service

## Partners

Local landowners, USDA Forest Service, Bureau of Land Management, Natural Resources Conservation Service, Wyoming Game & Fish, Park County Weed & Pest, Trout Unlimited, Greybull Valley Irrigation District, and Nature Conservancy.