

## LITTLE SNAKE RIVER CONSERVATION DISTRICT

**1996** As a result of local watershed assessment and implementation efforts, McKinney, Loco, and Muddy Creeks were listed as threatened for habitat degradation. In 1998, Savery Creek, was also listed as threatened for habitat degradation.

**1992-2007** Monitoring efforts in the entire Muddy Creek watershed were initiated in 1992. The Savery Creek Watershed project was initiated in 1998. Loco Creek is a sub-basin in the Savery Creek watershed. Currently the district monitors for physical, chemical and biological parameters along with stream discharge at 22 stations.

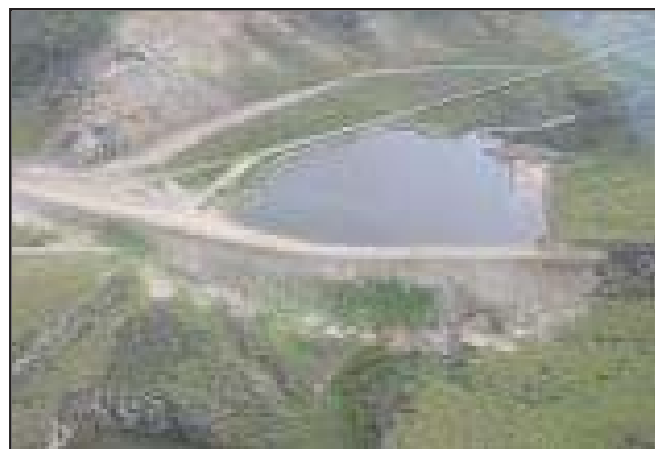
Through the Coordinated Resource Management process, the local district has developed a number of 319 implementation plans to address the threats within the watershed.

### On the ground implementation

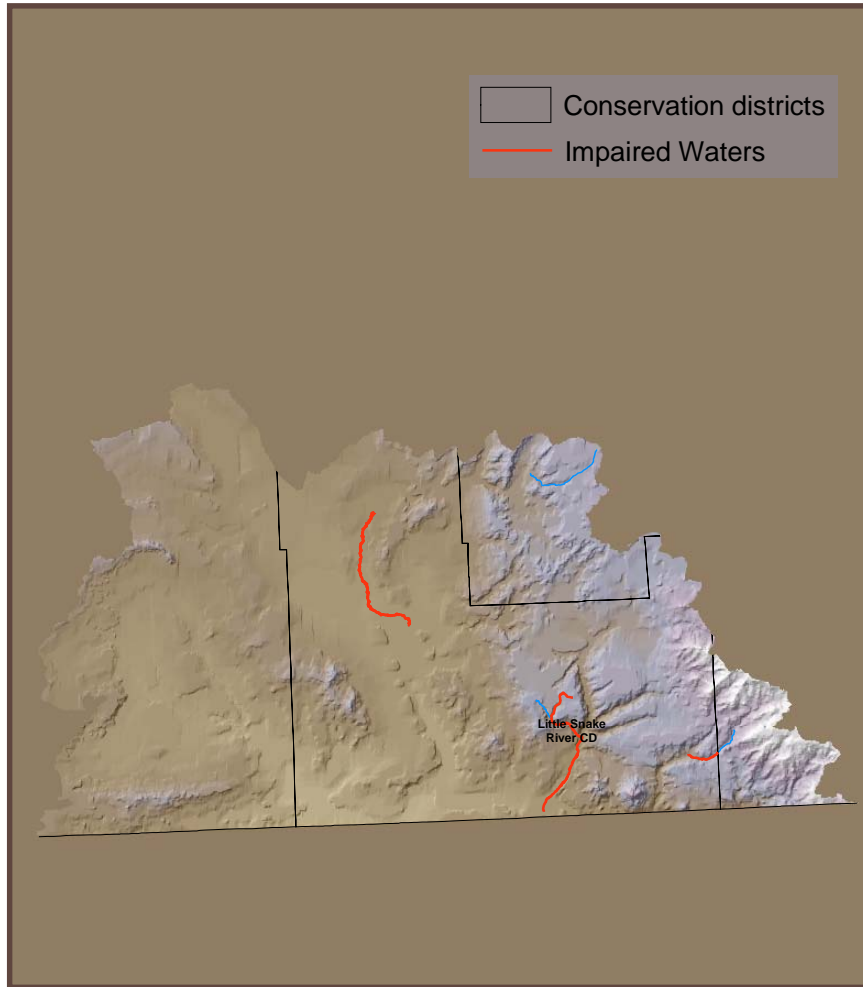
Implementation activities include upland water development for livestock, wildlife, and public recreation, fencing, road rehabilitation and improvement prescribed burning, brush control, development of beneficial wetlands, and stream restoration. Implementation has treated 800,000 acres in the watersheds. The effective implementation efforts in the Loco, Littlefield and McKinney Creek watershed and the Muddy Creek watershed above Littlefield Creek, resulted

in these streams being removed from the threatened list in 2000.

Since 2005, additional projects implemented include the Deep Gulch Reservoir on state lands, the J.O. Wetlands project on BLM lands, and the Savery Creek project to control bank erosion and provide fish habitat, and fish passage projects. Brush management using herbicides and prescribed burning has also been conducted to reduce fuels on BLM lands.



# LITTLE SNAKE RIVER WATERSHED



## Watershed Investment

Local	\$560,000
State	\$5,368,624
Federal	\$2,791,930
Private	\$1,202,000

**Total**                    **\$9,912,554**

## Contributors

Interior Department – CUPCA  
 BLM  
 Private Landowners/permittees  
 Little Snake River CD  
 Water Development Commission  
 State Grazing Board  
 Department of Agriculture  
 Game & Fish Department  
 Wildlife & Natural Resource Trust Fund  
 DEQ/EPA  
 US Fish & Wildlife Service, Partner Program  
 Natural Resources Conservation Service  
 Rocky Mountain Elk Foundation  
 Ducks Unlimited  
 National Fish and Wildlife Foundation

## Partners

Participants in the Muddy Creek CRM include, AL Land and Cattle Company, Natural Resources Conservation Service, Bruce Thayer, PH Livestock Company, Bureau of Land Management, Salisbury Livestock Company, Carbon County Commissioners, Snyder Oil Corporation, Carbon County Cooperative Extension Service, Stratton Sheep Company, City of Cheyenne, Board of Public Utilities, Three Forks Ranch, Desert Cattle Company, University of Wyoming, Ducks Unlimited Incorporated, USDA CUPCA, Weber Ranch, US Fish & Wildlife Service “Partner program”, Environmental Protection Agency, Wyoming Dept. of Environmental Quality, Espy Livestock Company, Wyoming Game and Fish Department, Jack Creek Land and Cattle Company, Wyoming Outdoor Council, Ladder Livestock, Wyoming Riparian Association, National Fish and Wildlife Foundation, Wyoming Water Development Commission and Montgomery Livestock.

